

Location. Location. Us.



MICHAEL SALOVE COMPANY

Location. Location. Us.

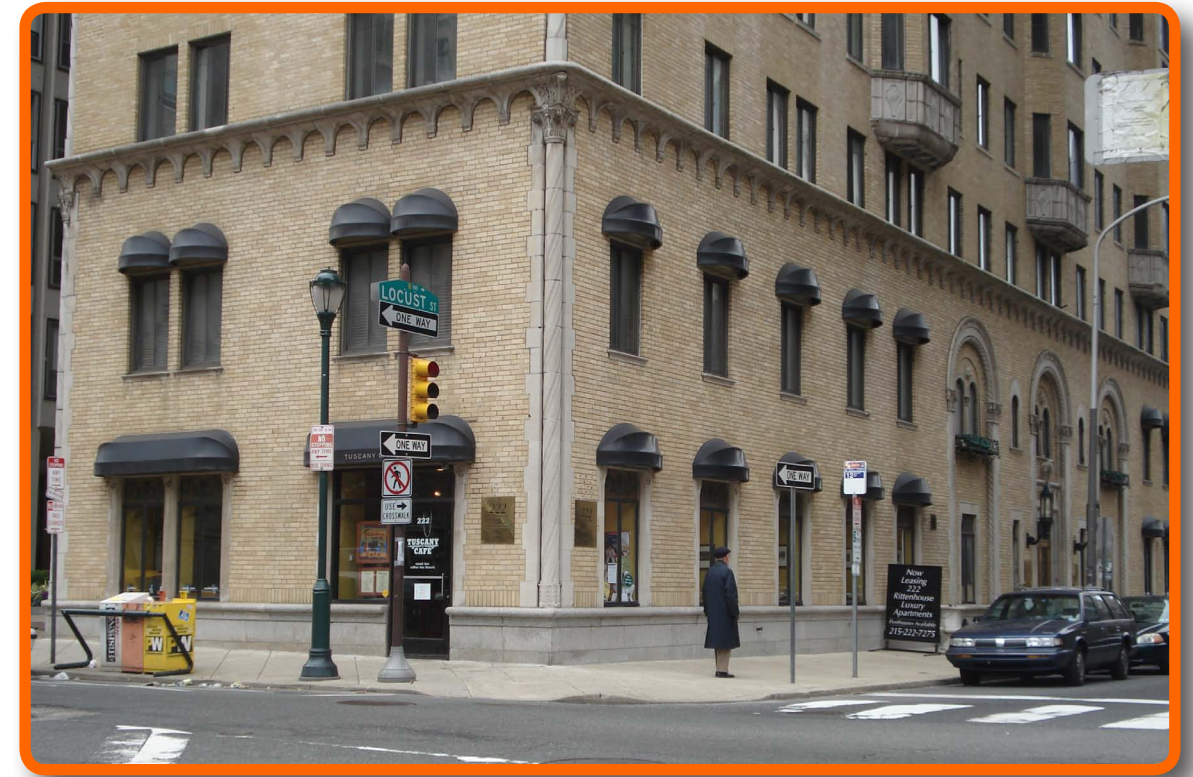
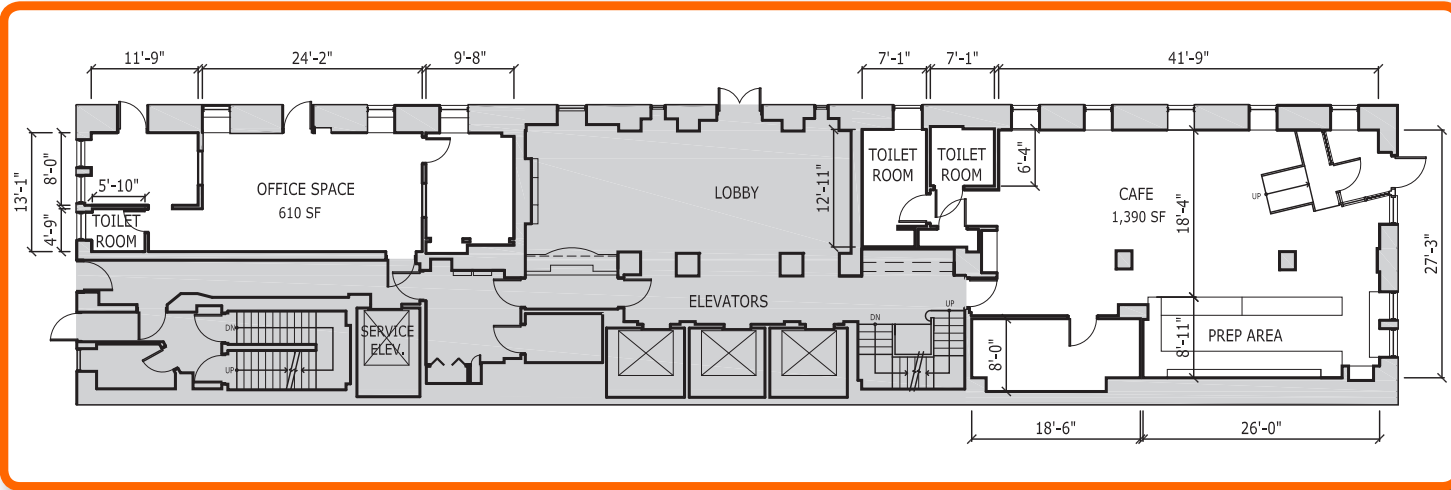


MICHAEL SALOVE COMPANY



# 222 W. RITTENHOUSE SQUARE CENTER CITY, PHILADELPHIA

## RETAIL SPACE(S) FOR LEASE



### CLOSE PROXIMITY TO:

#### RESTAURANTS:

- SMITH & WOLLENSKY
- PARC
- ROUGE
- DEVON SEAFOOD GRILL

#### RESIDENTIAL:

- RITTENHOUSE HOTEL
- THE DORCHESTER
- THE BARCLAY
- PARC RITTENHOUSE

- PRIME CORNER EXPOSURE ON RITTENHOUSE SQUARE
- GROUND FLOOR OF HIGH-END RESIDENTIAL BUILDING
- MULTIPLE RETAIL SPACES AVAILABLE:
  - 1,400 SF GROUND FLOOR CORNER
  - 615 SF WITH LOCUST STREET FRONTAGE

**CONTACT:**  
**TIM DUFFY**  
 215.568.2600 x16  
 TDUFFY@SALOVE.COM

