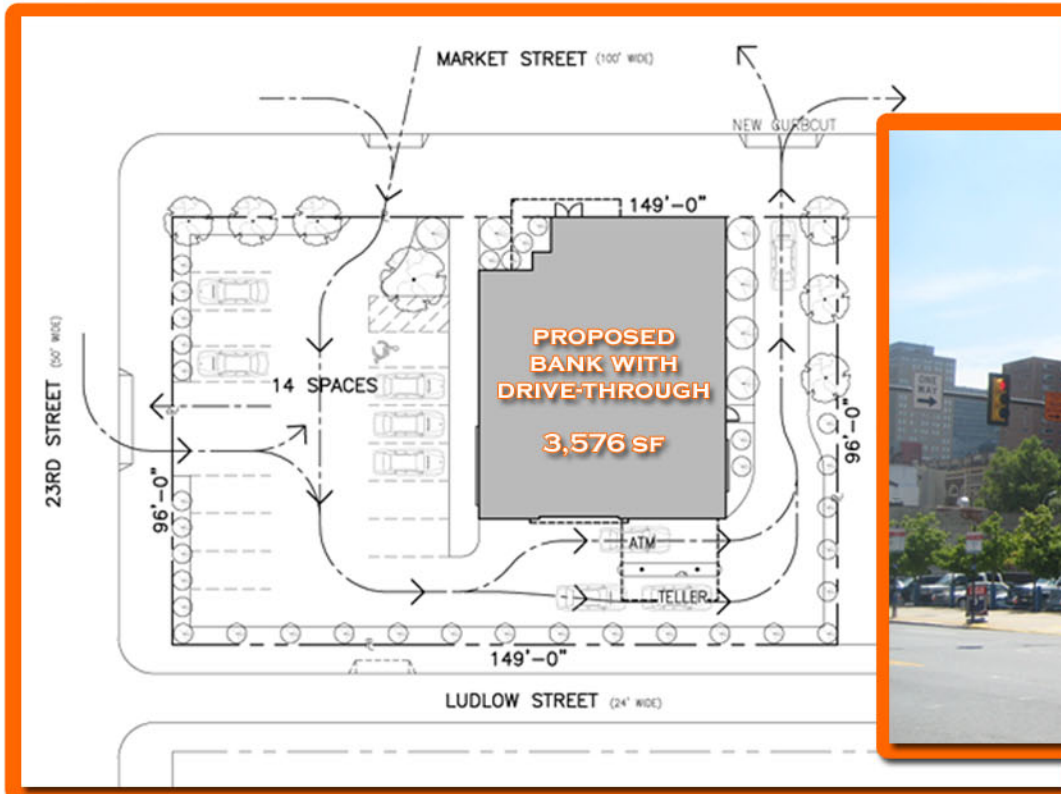


Location. Location. Us.SM



MICHAEL SALOVE COMPANY

GROUND LEASE OPPORTUNITY
23RD AND MARKET ST., PHILADELPHIA, PA
AVAILABLE FOR GROUND LEASE ± 14,300 SQ FT



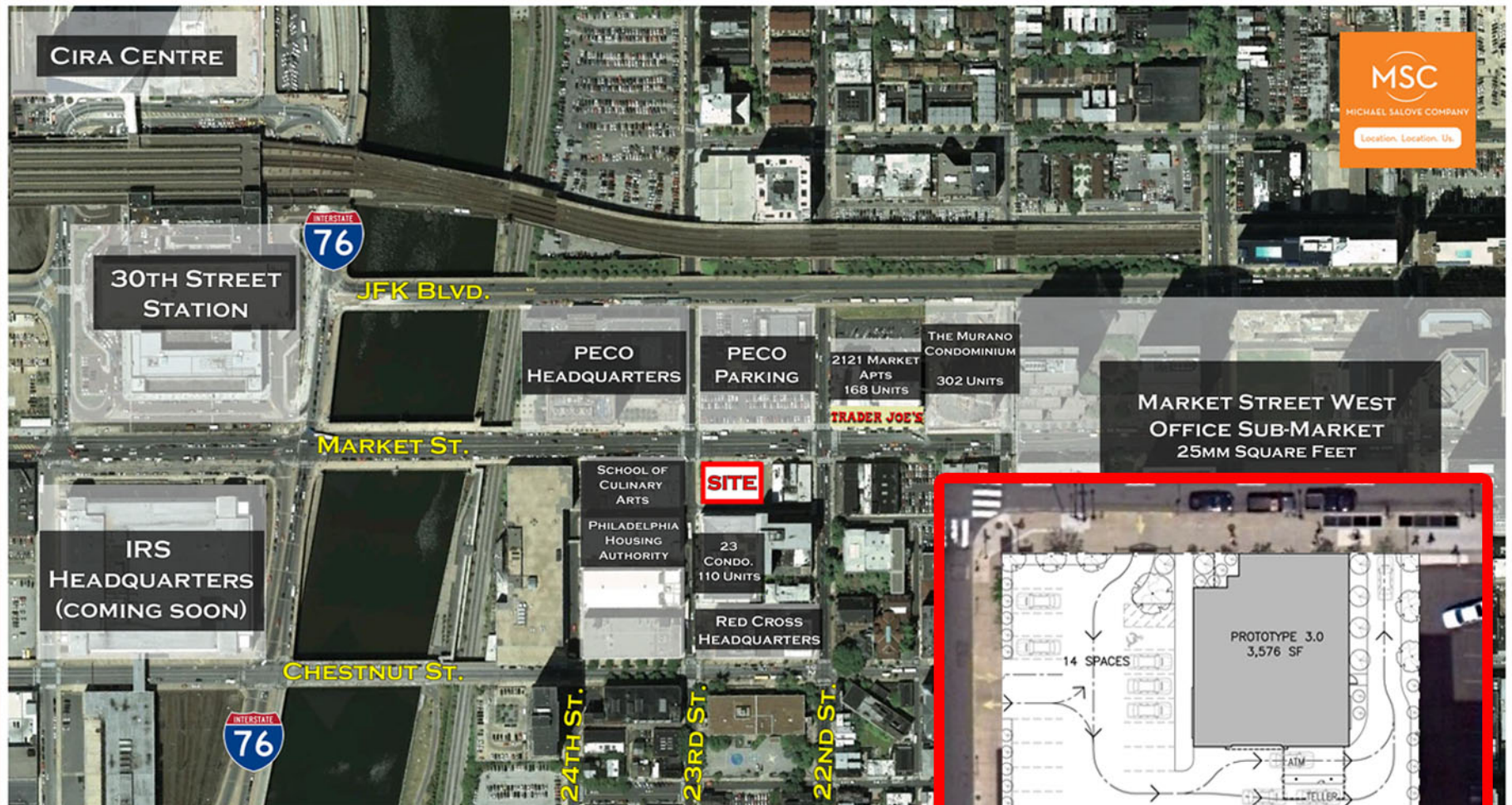
- RARE BANK PAD IN CENTER CITY, PHILADELPHIA
- PREMIER CORNER ON MARKET STREET
- TREMENDOUS VISIBILITY AND VEHICULAR TRAFFIC
- DENSE OFFICE AND RESIDENTIAL POPULATION
- DRIVE-THROUGH POTENTIAL
- C-4 ZONING

CONTACT:
JACOB COOPER
215.568.2600 x 14
JCOOPER@SALOVE.COM

Location. Location. Us.SM



MICHAEL SALOVE COMPANY



1700 MARKET STREET . 17TH FLOOR . PHILADELPHIA, PA 19103
PH 215.568.2600 . FX 215.568.2666 . WWW.SALOVE.COM